



Thailand Research Fund

Catalyst for changes

We are...



- ▶ Established in 1992
 - ▶ Research Endowment Fund Act
 - ▶ Core Values of TRF
 - ▶ Think Globally
 - ▶ Research Management Excellence
 - ▶ Force for Changes
 - ▶ Support wisdom creation for national development
-



Our vision and mission

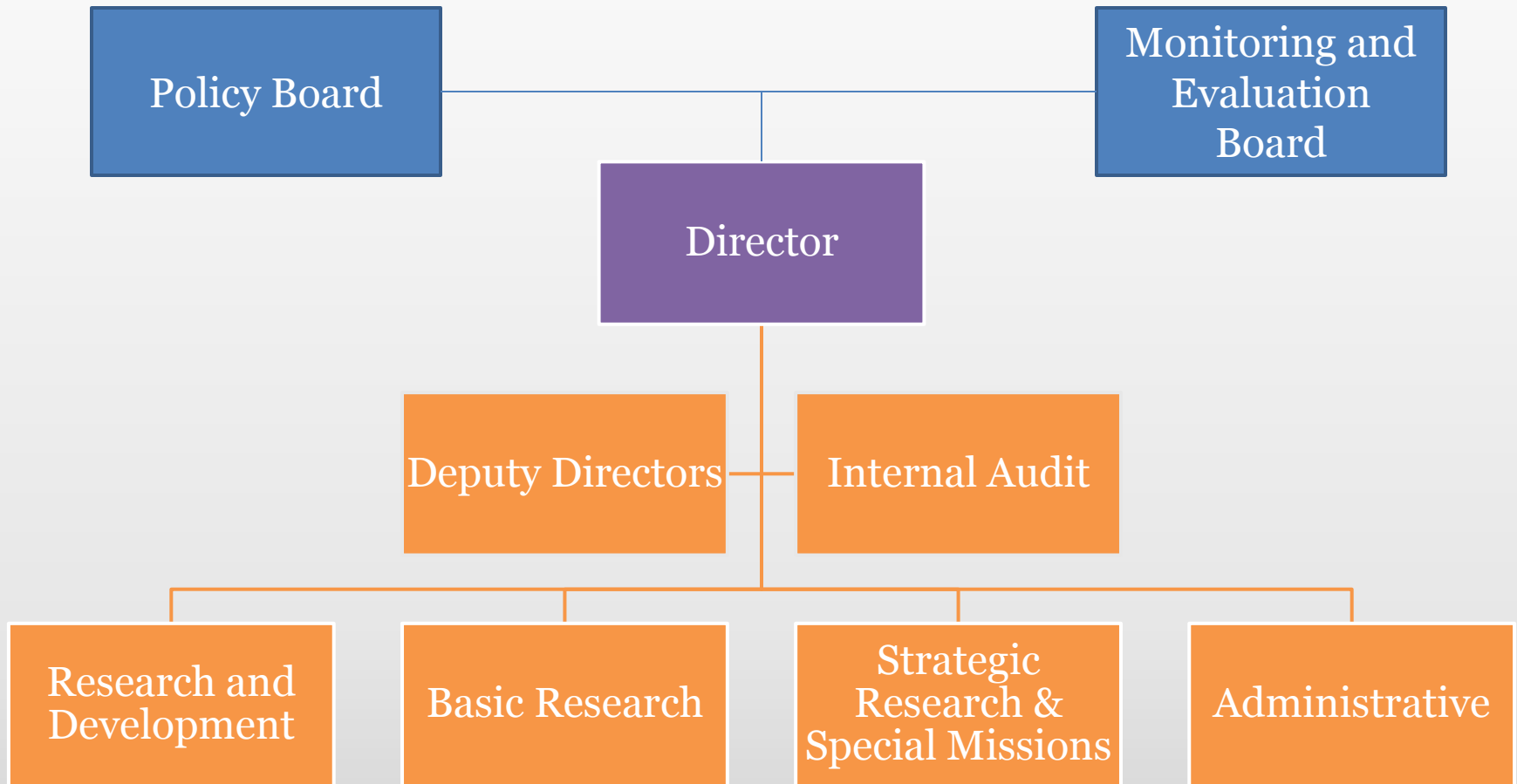


- ▶ Top in Research Management Excellence in Asia

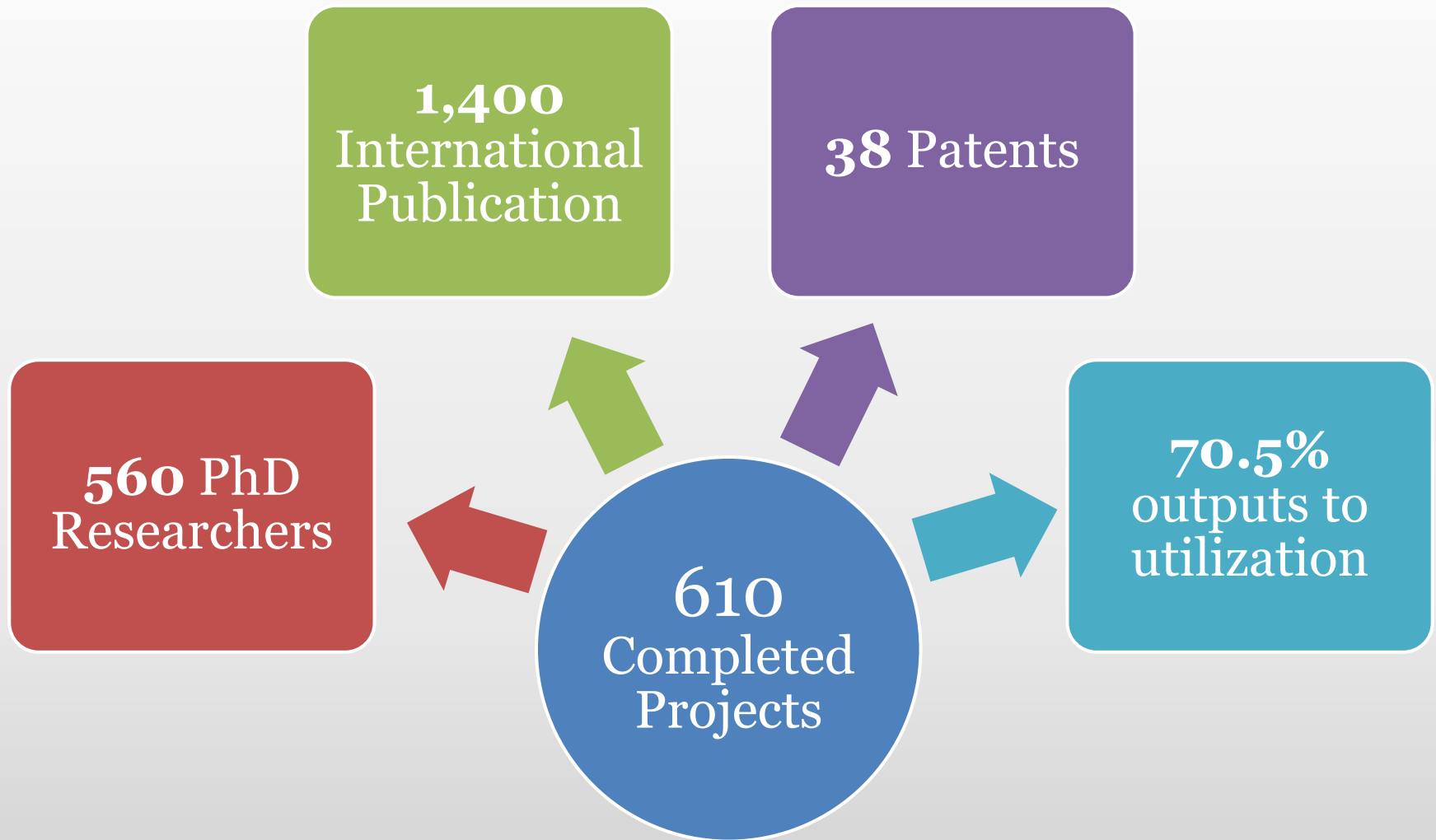
 - ▶ Commitment to support
 - R&D to create knowledge, innovations, and patents
 - Advanced researchers and research institutions
 - Development of national research system
 - Promote utilization of research outputs
 - R&D toward Social Empowerment
-



Organization Structure



Performance Research Utilization in 2013



R&D Public Wellbeing Division



- ▶ Strategic Research Issues
- ▶ Water, Climate Change, Land and Environmental Management
- ▶ Coastal and Natural Resource Management
- ▶ Disaster Management
- ▶ Public Health and Urban Environment



TRF Supports



Knowledge Creation

R & D Project



Knowledge Exchanges

Conference, Workshop, Researcher Link, Joint Research Center



Capacity Building

Exchange Programs, Travel Grants, PhD Scholarship,
Professional-Mid Career Development



Highlight in 2014: Water resource management



- ▶ Goals: Scientific outputs to support water research management and security, water allocation, equality under changing environment and new treats
- ▶ E.g. policy recommendation for provincial development, strategies for water research development, database system for precipitation forecast, SRI roadmap of water climate change land and environmental management



Highlight in 2014: Climate Change Research

- ▶ 3 Research Centers: Center for Atmospheric Physics, Center for Regional Climate Model, Center for Seasonal Weather Forecast
- ▶ Knowledge and tools on climate changes impact assessment on agricultural and other sectors
- ▶ Climate change adaptation and climate risks for community and vulnerable sectors
- ▶ Climate change policy recommendation, Development of Measure-Report-Verity system on key sectors in Thailand



On-Going Climate Change Research



Variability in precipitation

- *Atmospheric physics and chemistry*
- *Cloud physics and chemistry*
- *Surface-air exchange and interactions*
- *Soil moisture, evapotranspiration*
- *Variability and teleconnections*
- *Short-term prediction & database*

Mainstreaming CC into Development Strategies

- *Adaptive capacity of community*
- *Risk management mechanism - crop insurance*
- *Holistic approach for climate change adaptation*

Climate Policy

- *Post-2020 Climate Change Regime*
- *Legal & Institutional Framework*
- *Measurement, Reporting and Verification (MRV) system*
- *Climate Change & Green Economy*

International Research Collaboration



Chinese Academy of Science (CAS)



National Natural Science Foundation of
China (NSFC)



Institute of Atmospheric Physics (IAP)



State Oceanic Administration (SOA)



China-Thailand Joint Seminar on Climate



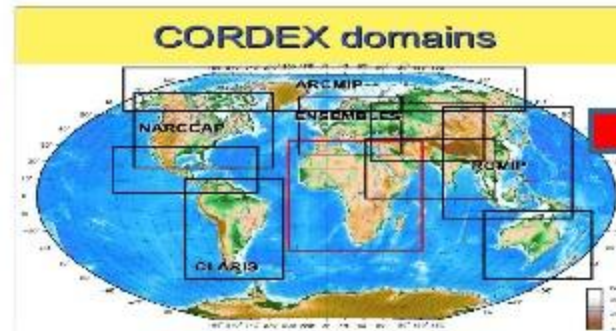
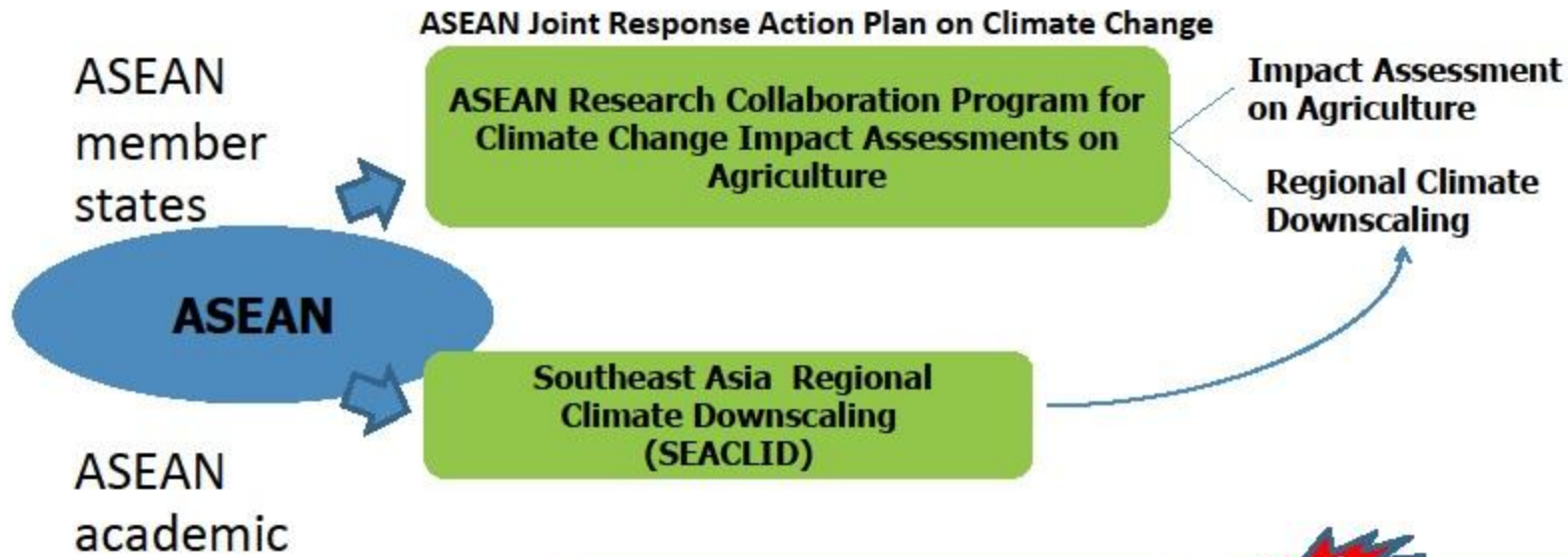
2009 - 1st seminar in Bangkok, Thailand

2011 - 2nd seminar in Kunming, China

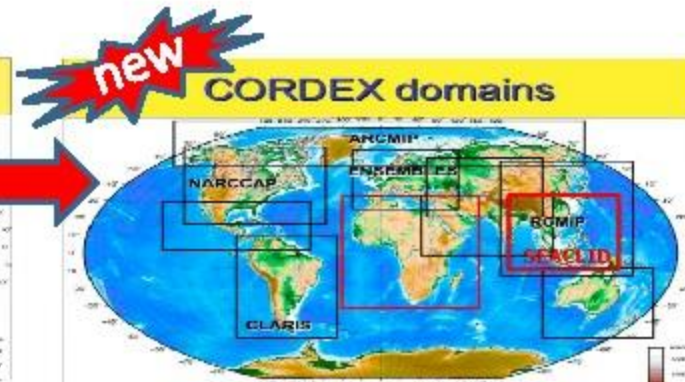
2013 - 3rd seminar in Phuket, Thailand



Collaboration in ASEAN



- Regional climate change scenarios are the basis for assessment of impacts
- SEA countries are not part of CORDEX
- CORDEX resolution is 50 km; We may need higher than this



- SEACLID Project has been invited to be part of CORDEX
- SEACLID = CORDEX-SEA
- Model resolution to be increased to 25 km.



On-Going Climate Change Research



ASEAN

- Policy recommendation for climate change impacts on ASEAN agricultural production as well as research network and data sharing systems

Member state

- Capacity building on downscaling global climate models and crop model to driving further initiative in some member states as well as the expertise enhancement in experience of the member states

Sub-national agency

- Recommendation to cope with the impacts of climate change on specific agricultural systems relevant to their needs and conditions.

UNFCCC, IPCC and Others

- IPCC assessment report
- Human resource developments
- Regional dialog & working models

Thank you



Questions & Comments
Email: Chanathip@trf.or.th

